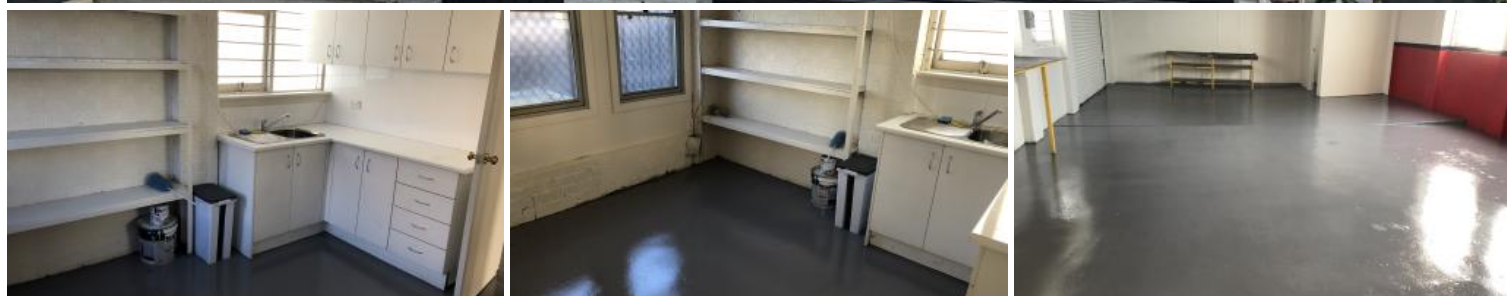


Leased



36 Claremont Ave, Greenacre



Street Facing Warehouse or Factory

Ideally located just off Brunner Road and minutes to Hume Highway and Rookwood Road.

FOR LEASE

STREET FACING WAREHOUSE OR FACTORY 100m²

DRIVEWAY ACCESS

Separate metre and security gates

Office Area and amenities on site

Zoned 4(a) general industrial and suitable for a wide variety of uses

Long term lease available

Onsite parking

AVAILABLE NOW Inspection via appointment only

Contact Rabie Chehade on 0409 006 900 or 9645 3352

The above information provided has been furnished to us by the vendor/s. We have not verified whether or not that information is accurate and do not have any belief in one way or the other in its accuracy. We do not accept any responsibility to any person for its accuracy and do no more than pass it on. All interested parties should make and rely upon their own inquiries in order to determine whether or not this information is in fact accurate.

Price	\$450 per week Inc GST
Property Type	Commercial
Property ID	293
Warehouse Area	100 m ²

Agent Details

Rabie Chehade - 0409 006 900

Office Details

Yagoona
PO Box 2 Yagoona NSW 2199
Australia
02 9645 3352



IGROUP
— REAL ESTATE —